

'Evolving' French Spots (with a Short Side on Early Harlequin) Phalaenopsis

Karl Varian

8 May 2021

Agenda

- What are French Spots
- From what species do we get spots
- Foundation Grex(es) of French spots
- The Evolution of French Spot Lines
 - Early Harlequins
- Additional lines
- Latest awardees



‘French Spots’ – Initially referred to a Vacherot & Lecoufle breeding line which combined and recombined the shape and size of *Phal. amabilis* and *Phal. aphrodite* with the spots and color of *Phal. stuartiana* and *Phal. schilleriana* resulting in white flowers with spots on the sepals and petals.



What are French spots?

- What is a spot?

- Webster's New World Dictionary defines spot as:
“... a small area that is different, as in color or texture, from the background or main area of which it is a part ...”
- Additional definitions
 - Bar – “strip, band or broad line”
 - Blotch – “a large, irregular spot”
 - Splotch – “a spot or splash that is irregular” (personally, a merging of blotches and/or jagged blotch)
- Spots may appear as tessellation in some ‘French Line’ and Phal. *lueddemanniana* breeding

From/Updated Judging Spotted Phalaenopsis –
John D. Stubbings, Awards Quarterly 1990

What are French spots?

- What about for Phalaenopsis?

- Many of the Phalaenopsis hybrids have markings that include spots, blotches and bars on the same flower.
- “French spots” - True spots where each spot is nearly circular and about one millimeter in diameter.
- In general, spotted Phalaenopsis as judged at shows should require a general appearance of spotting on the sepals and petals
- Some breeding shows a tendency for the spots to merge, forming blotches or concentric bars toward the center of the flower.



Phal Brother Canary 'Cat's Paw Tigerling'



From What Phalaenopsis Species Do We Get Spots?

- *Phal. stuartiana*
 - *Phal. lueddemanniana*
 - *Phal. gigantea*
 - *Phal. amboinensis*
 - *Phal. hieroglyphica*
 - *Phal. fasciata*
 - *Phal. sumatrana*
- ... And more



From what species do we get spots?

- *Phal. stuartiana*

- Has a long lasting, white (to yellow) flower with highly variable purple-maroon random spots on sepals, petals, and lip.
- Especially concentrated on the inferior half of lateral sepals. Varies from a few blotches to an almost full field of color.



Phal. stuartiana 'Taisuco B90-68' AM/AOS



Phal. stuartiana 'Susanna' HCC/AOS



Phal. stuartiana 'Grange Gold' AM/AOS



Phal. stuartiana 'Weißkirchen' SM/DOG

Foundation Grex(es) of French spots Phal. Wiganiae

- Cross registered in 1899 by S. Low
- Not discussed as the foundation plant
- But one can clearly see the potential of using this grex in breeding

- General Comments:
 - Generally, Vacherot & Lecoufle participated in European Shows and Judging.
 - Hugo Freed once offered Fritz Hark some pollen from a dark-lipped Phal. Ann Marie Beard. He smiled and thanked him but said no, explaining that the light-colored pink lip is what the orchid judges at Britain's RHS valued most.



Phal. Wiganiae 'Eugen' BM / DOG
(Phal. schilleriana x Phal. stuartiana)
NS 6.0 x 6.0 cm

Foundation Grex(es) of French spots Phal. Mouchette

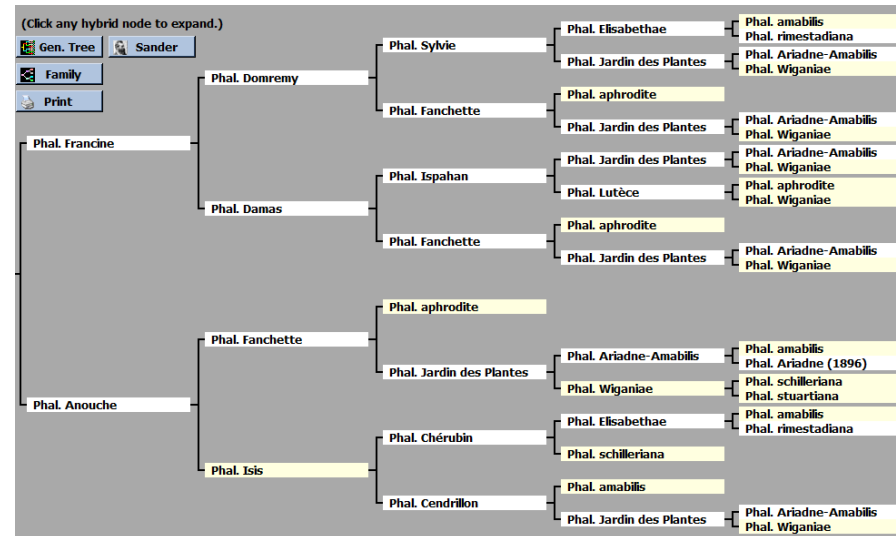
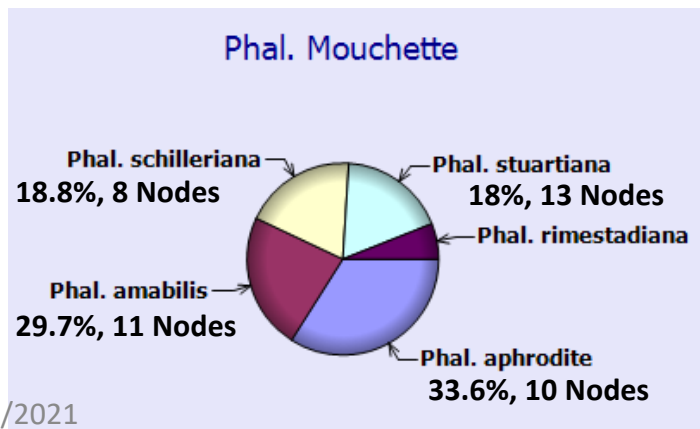
- Cross between Phal. Francine and Phal. Anouche
- Registered in 1972 by Vacherot & Lecoufle
- 71 F1 and 4152 total progeny
- No AOS awards
- 1 AM/RHS awards



Phal. Mouchette 'Tahiko' AM/RHS
Oct 1973

Foundation Grex of French spots

- The term "French Spots" was coined by Keith Shaffer of Shaffer's Tropical Gardens in Capitola, CA.
- Named after Vacherot & Lecoufle line of breeding by combining and recombining the shape and size of *Phal. amabilis* and *Phal. aphrodite* with the spots and color of *Phal. stuartiana* and *Phal. schilleriana*.
- Introduced to the American Public at the 1984 11th WOC in Miami, FL
- Foundation grex was *Phal. Mouchette* (*Phal. Francine* x *Phal. Anouche*)
 - Shaffer purchased a clone from Maurice Lecoufle and begun a line of breeding called French Spots.



Evolving French Spots

- To investigate the evolving of French Spots, I compiled a database of over 500 grexes that had
 - The classical French Spot mix of species, *Phal. amabilis*, *Phal. aphrodite*, *Phal. schilliriana*, and *Phal. stuartiana*
 - Pictures grexes that had ‘French Spot’ like spotting
 - “Key” / foundational grexes
 - NO progeny of *Phal. Golden Peoker* were included in the database.



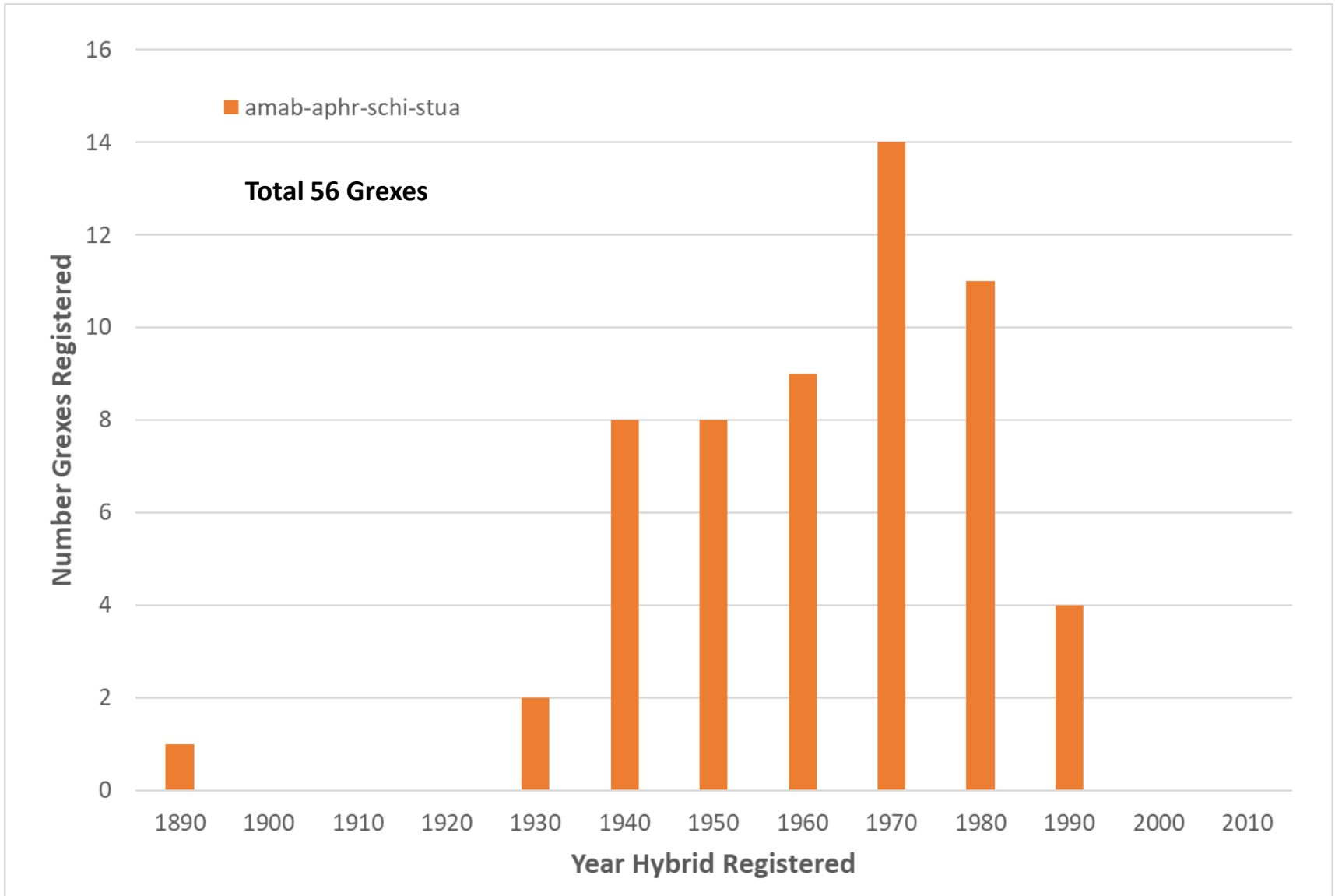
Phal. Dame de Coeur



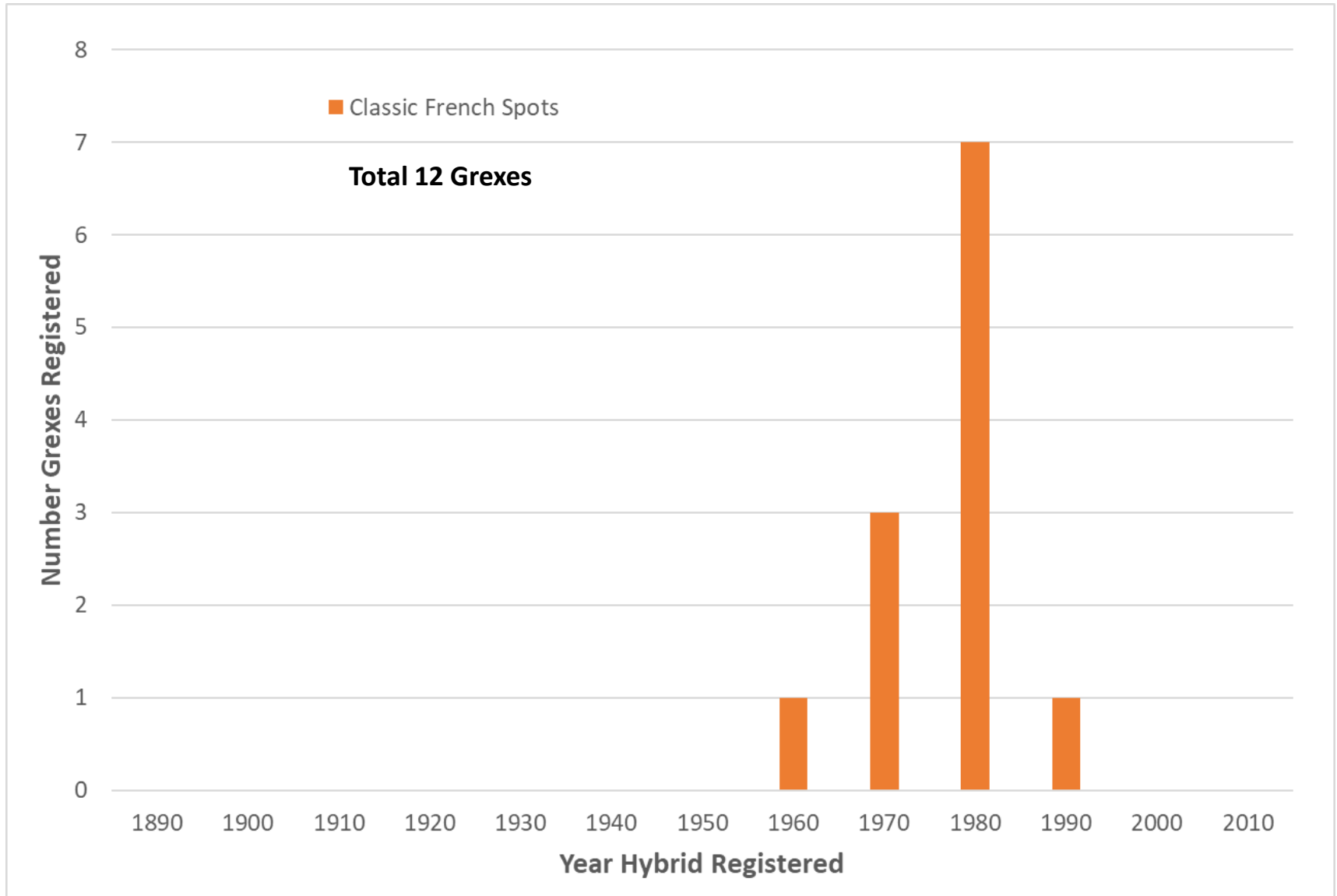
Phal. Leopard Prince

‘Hwa Yuan Red Leopard’ FCC/AOS
Dscpt: “... epitome of French Spot style...”

'Evolving' French Spots

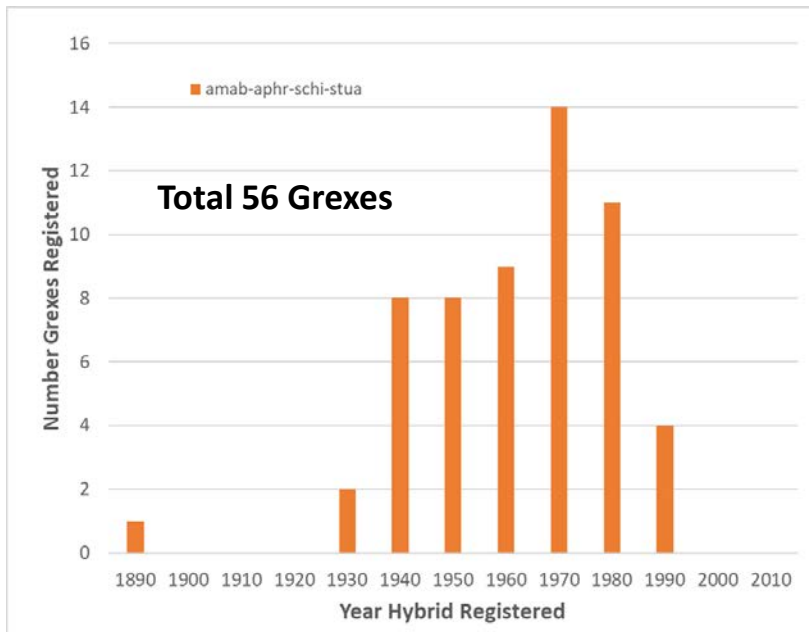


'Evolving' French Spots, confirmation

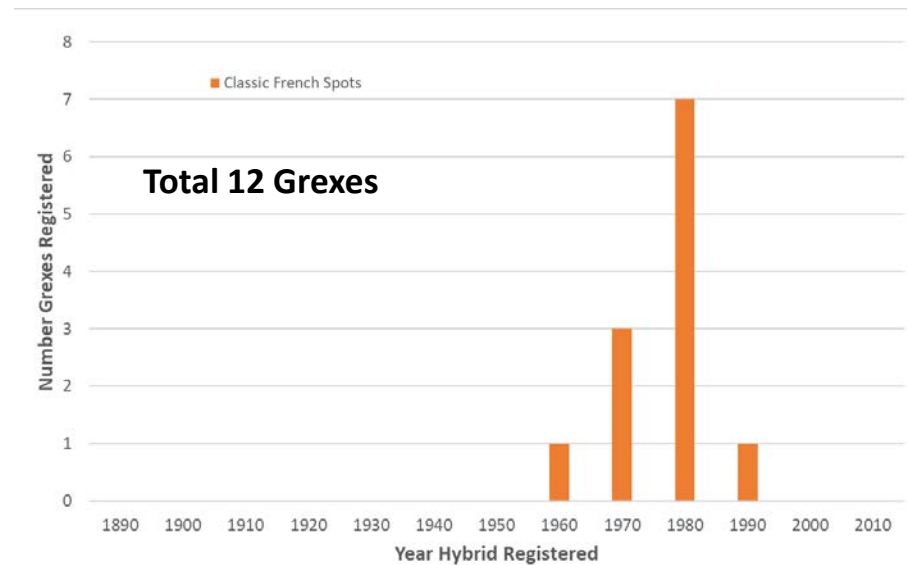


'Evolving' French Spots Registered and Confirmed

Correct Species



Confirmed



**Definite drop in hybridization and awards
But NOT a drop in interest in 'French Spots'**

Confirmed Grexes, Variability

Phal. Dame de Coeur

(Phal. Elise de Valec x Phal. Frisson), Regr. 1984

33% Phal. amabilis, 29.8% Phal. aphrodite,
20.3% Phal. schilleriana, 16.9% Phal. stuartiana (66 nodes, 30%)



'Maple Bridge' HCC/AOS
Feb 1988, NS 8.5 cm
6 Flws, 0 Buds, 1 Inflor



'Jim Krull' HCC/AOS
Mar 1989, NS 8.7 cm
7 Flws, 7 Buds, 1 Inflor



'Ponkan's Beauty Spot' HCC/AOS
Jan 1986, NS 8.2 cm
6 Flws, 3 Buds, 1 Inflor

Spot Intensity and Density Highly Variable

Confirmed Grexes



Phal. Summa
'Maple Bridge' HCC/AOS
Jan 1983, NS 8.5 cm
6 Flws, 0 Buds, 1 Inflor,
(Phal. Sabine x
Phal. Francine)
Regr. 1984
33% Phal. amabilis,
29.8% Phal. aphrodite,
20.3% Phal. schilleriana,
16.9% Phal. stuartiana
(66 nodes, 30%)
Vacherot-Lecoufle



Phal. Liseron
'Zuma Canyon' HCC/AOS
Oct 1990, NS 10.2 cm
8 Flws, 0 Buds, 1 Inflor,
(Phal. Tosca x
Phal. Elise de Valec)
Regr. 1986
31.7% Phal. amabilis,
31.4% Phal. aphrodite,
19.7% Phal. schilleriana,
17.2% Phal. stuartiana
(83 nodes, 30%)
Vacherot-Lecoufle



Phal. Elise de Valec
'Milky Way' HCC/AOS
Feb 1988, NS 8.7 cm
7 Flws, 2 Buds, 1 Inflor,
(Phal. Raptigny x
Phal. Mouchette)
Regr. 1980
33.6% Phal. amabilis,
29.3% Phal. aphrodite,
20.7% Phal. schilleriana,
16.4% Phal. stuartiana
(38 nodes, 30%)
Vacherot-Lecoufle

Confirmed Grexes



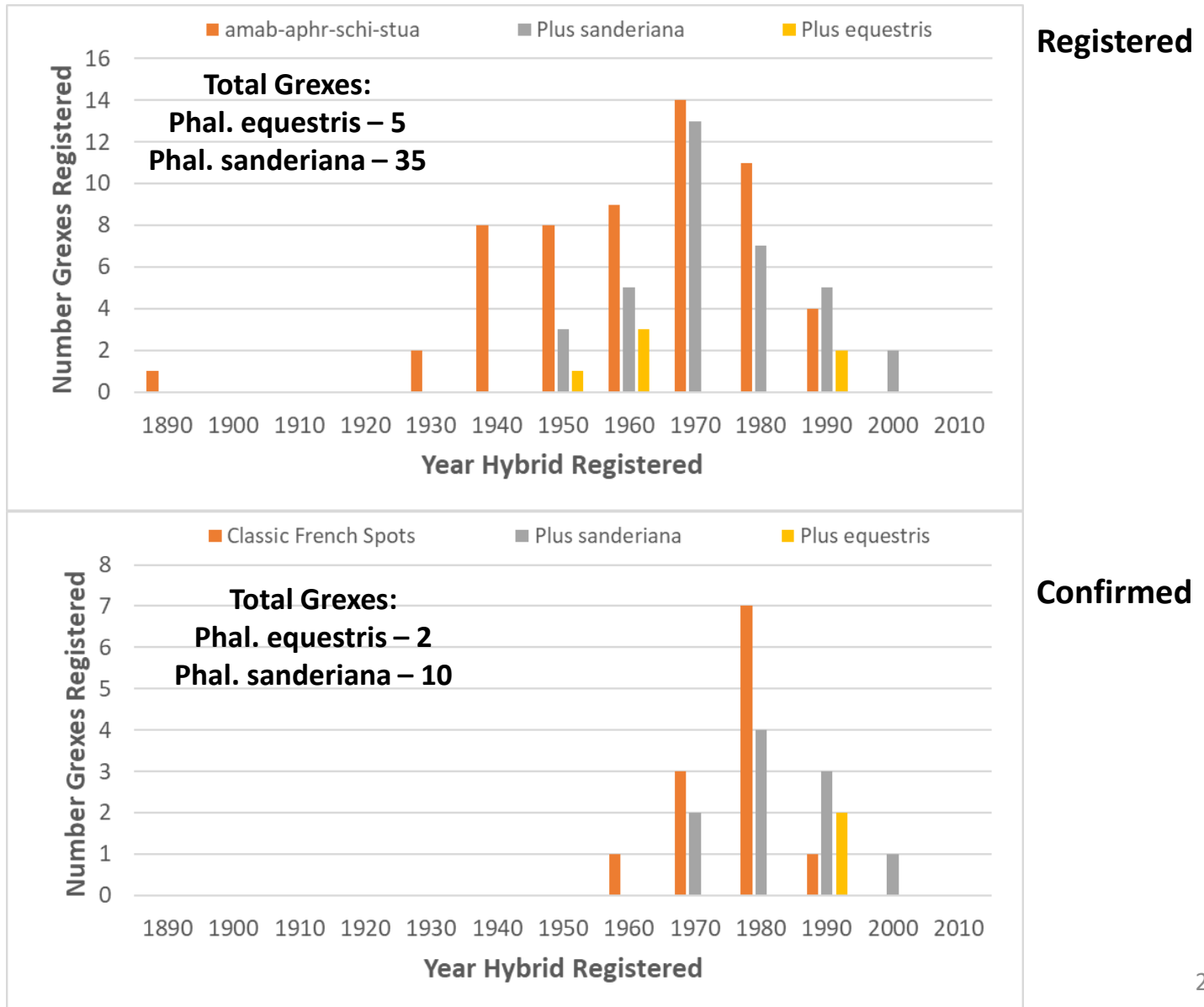
Phal. Judith Gill
 'Geyserland' HCC/AOS
 Oct 1982, NS 9.2 cm
 9 Flws, 0 Buds, 1 Inflor,
 (Phal. Doris x
 Phal. Mouchette)
 Regr. 1979
 58.6% Phal. amabilis,
 23% Phal. aphrodite,
 9.4% Phal. schilleriana,
 9% Phal. stuartiana
 (13 nodes, 28%)
 Shaffer's

Phal. Sarah Elizabeth Rowe
 'Sasa' HCC/AOS
 Oct 1984, NS 10.3 cm
 5 Flws, 6 Buds, 1 Inflor,
 (Phal. Melissa Dawn x
 Phal. Vitrail)
 Regr. 1983
 47.8% Phal. amabilis,
 24.2% Phal. aphrodite,
 16.0% Phal. schilleriana,
 11.9% Phal. stuartiana
 (66 nodes, 19%)
 John E. Wilson

- Awarded grexes that have 'French Spots' appear to occur in a narrow window of contributing species and the influence of Phal. stuartiana
- Spot density and intensity is variable. Related to Phal. stuartiana spot variability?
- Branching florescence are common
- Substance weak
- Tendency to be low in floriferousness
- Hybridizers introduced additional species to address last two points
- Other awarded grexes (no photos):
 Phal. Francine
 Phal. Spotted World
 Phal. Eastern Beach

'Evolving' French Spots

Addition of *Phal. equestris* – *Phal. sanderiana*



Confirmed Grexes

Addition, *Phal. equestris*

(Multi-branching, Floriferousness, Darker Lips)



Phal. Frisson Sand
'Spring Sunshine #1' AM/AOS
Apr 1996, NS 4.5 cm
61 Flws, 27 Buds, 2 Inflor,
(Phal. Frisson x
Phal. Cassandra)
Regr. 1993
25% *Phal. equestris*
33.7% *Phal. stuartiana*
(29 nodes, 31%)
Chou Chien Chua



Phal. Fajen's Dappled Snow
'Rockbend's Peloric' HCC/AOS
Mar 1994, NS 5.1 x 5.3 cm
28 Flws, 7 Buds, 2 Inflor,
(Phal. Cassandra x
Phal. Linotte)
Regr. 1993
25% *Phal. equestris*
33.8% *Phal. stuartiana*
(42 nodes, 31%)
Fajen's

Confirmed Grexes

Addition, *Phal. sanderiana*

Flower color, broaden Blooming Season, Heat tolerant



Phal. Hokuspokus
'Oak Hill' HCC/AOS
Jan 1978, NS 10.0 cm
16 Flws, 2 Buds, 2 Inflor,
(Phal. Lipperose x
Phal. Francine)
Regr. 1974
3.1% *Phal. sanderiana*,
11.7% *Phal. stuartiana*
(12 nodes, 18%)
A. Rohl



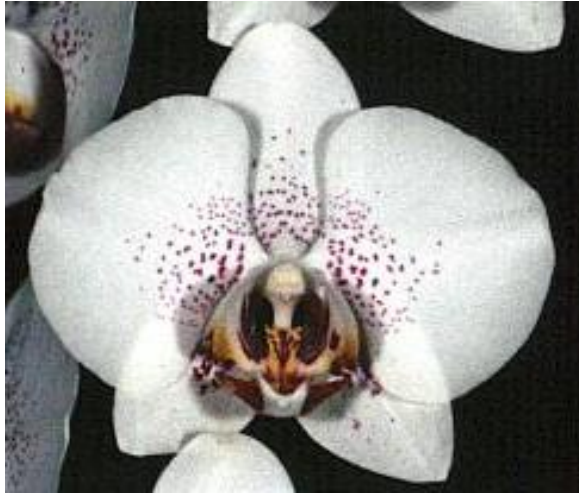
Phal. Melinda Nan
'Billi' HCC/AOS
Mar 1981, NS 10.5 cm
5 Flws, 0 Buds, 1 Inflor,
(Phal. Mistinguett x
Phal. Mouchette)
Regr. 1979
12.5% *Phal. sanderiana*,
12.1% *Phal. stuartiana*
(14 nodes, 24%)
Shaffer's



Phal. Mancini
'Zuma Bonita' HCC/AOS
Oct 1987, NS 9.7 cm
12 Flws, 1 Buds, 1 Inflor,
(Phal. Scherzo x
Phal. Joline)
Regr. 1987
3.5% *Phal. sanderiana*,
16.2% *Phal. stuartiana*
(38 nodes, 21%)
Marcel Lecoufle

Confirmed Grexes

Phal. equestris, Phal. sanderiana: Comments

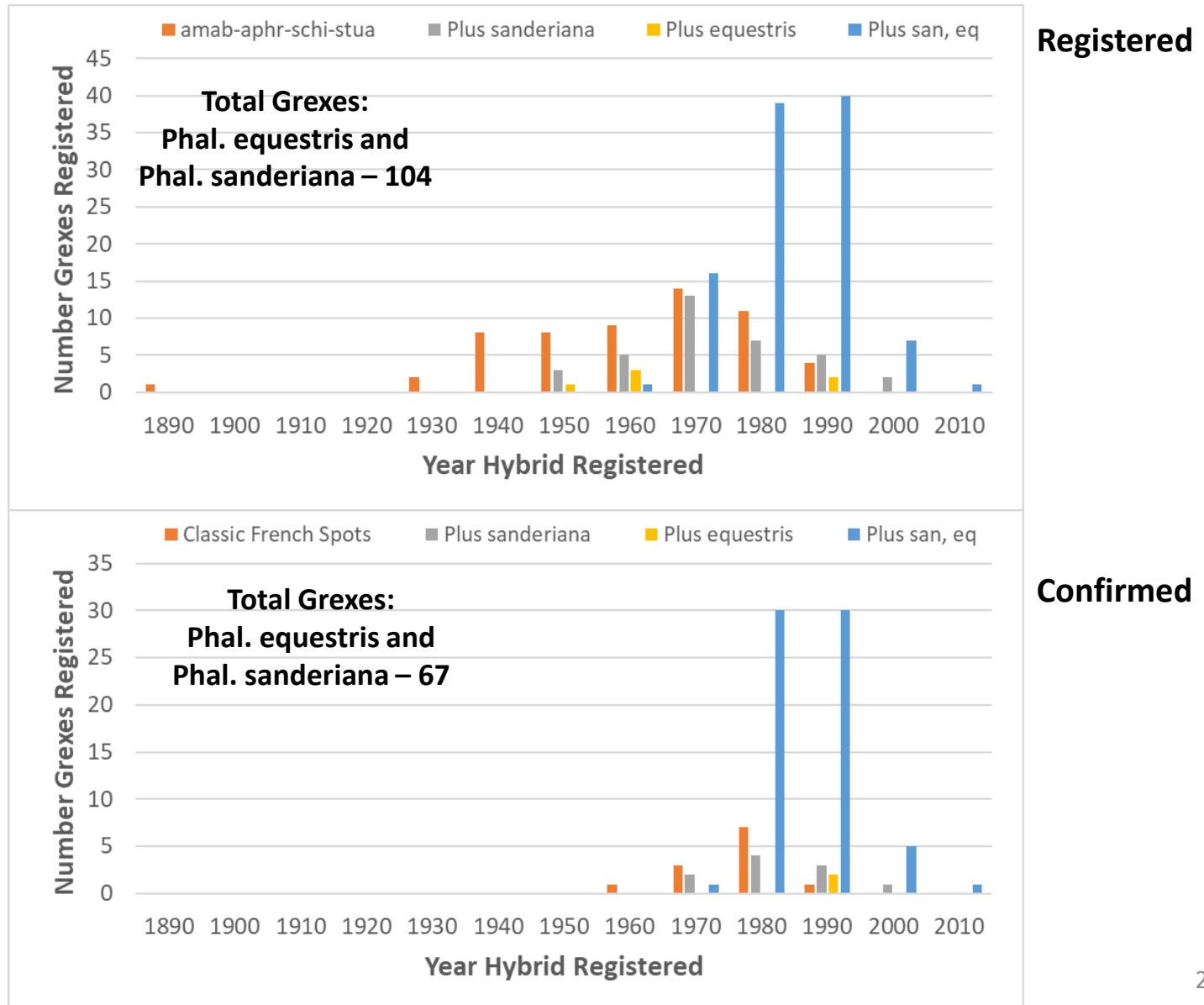


Phal. Manchosa de Caso
'Mercy' AM/AOS
Feb 1994, NS 9.8 x 8.7 cm
12 Flws, 2 Buds, 1 Inflor,
(Phal. Mancini x
Phal. Liseron)
Regr. 1991
1.8% Phal. sanderiana,
16.7% Phal. stuartiana
(121 nodes, 27%)
J. Caso

- Relatively successful
 - More Floriferousness
 - Spots Intensity up
 - Broaden blooming season
 - Heat tolerance
 - Smaller flowers
- Hybridizers still looking to improve
- Other awarded grexes (no photos):
 - Phal. Welcome Home (Hausermann major)
 - Phal. Astoria (Zuma Canyon)
 - Phal. Memoria Clair Whitaker (Shaffer's)
 - Phal. Aramis (S. Swearington)

'Evolving' French Spots

Addition of *Phal. equestris* and *Phal. sanderiana*



Confirmed Grexes

Addition *Phal. sanderiana* & *Phal. equestris*, most AOS awards



Phal. Fairy Tales
'Amethyst' HCC/AOS
Jan 2008, NS 5.9 x 5.5 cm
10 Flws, 10 Buds, 1 Inflor,
(Phal. Be Glad x
Phal. Elise de Valec)
Regr. 1989
1.6% *Phal. sanderiana*,
28.1% *Phal. equestris*,
20.7% *Phal. stuartiana*
(39 nodes, 24%)
Krull-Smith

Phal. Little Netsuke
'Petite Prince' HCC/AOS
Dec 2014, NS 5.6 x 5.0 cm
19 Flws, 11 Buds, 1 Inflor,
(Phal. Snow Leopard x
Phal. Cassandra)
Regr. 1987
0.8% *Phal. sanderiana*,
26.6% *Phal. equestris*,
33.6% *Phal. stuartiana*
(33 nodes, 21%)
E. Carlson

Phal. Brecko Dawnet
'Summerfield Porcelain Doll' HCC/AOS
Mar 2002, NS 6.0 x 5.8 cm
32 Flws, 6 Buds, 1 Inflor,
(Phal. Little Netsuke x
Phal. Dawn Treader)
Regr. 1999
3.3% *Phal. sanderiana*,
16.8% *Phal. equestris*,
33.8% *Phal. stuartiana*
(91 nodes, 18%)
Breckinridge

Phal. Gladrose
'Sierra Vasquez' AM/AOS
May 1992, NS 7.2 x 6.5 cm
20 Flws, 8 Buds, 1 Inflor,
(Phal. Melinda Rose x
Phal. Glad Melinda)
Regr. 1988
11.3% *Phal. sanderiana*,
14.1% *Phal. equestris*,
12.4% *Phal. stuartiana*
(30 nodes, 14%)
H. Hager

Confirmed Grexes

Addition *Phal. sanderiana* & *Phal. equestris*, high number of Progeny



Phal. Georges Seurat
'Debbi' AM/AOS
Mar 1987, NS 8.4 cm
7 Flws, 1 Buds, 1 Inflor,
(Phal. Scaramouche x
Phal. Hokuspokus)
Regr. 1984
2.3% *Phal. sanderiana*,
2.7% *Phal. equestris*,
10.5% *Phal. stuartiana*
(27 nodes, 11%)
Vacherot-Lecoufle



Phal. Dawn Treader
'Echo Valley' AM/AOS
Feb 2002, NS 7.0 cm
19 Flws, 0 Buds, 1 Inflor,
(Phal. Dawn Promise x
Phal. Gladrose)
Regr. 1992
5.9% *Phal. sanderiana*,
7.0% *Phal. equestris*,
34.0% *Phal. stuartiana*
(58 nodes, 16%)
H. Hager



Phal. Snow Leopard
'Colorama' HCC/AOS
Feb 1983, NS 7.4 cm
8 Flws, 5 Buds, 1 Inflor,
(Phal. Alida x
Phal. Francine)
Regr. 1982
1.6% *Phal. sanderiana*,
3.1% *Phal. equestris*,
17.2% *Phal. stuartiana*
(43 nodes, 21%)
C. Hoover



Phal. Coquinette
'Carmela' AM/AOS
May 1992, NS 7.2 x 6.5 cm
12 Flws, 2 Buds, 1 Inflor,
(Phal. Scaramouche x
Phal. Joline)
Regr. 1983
4.3% *Phal. sanderiana*,
2.7% *Phal. equestris*,
12.4% *Phal. stuartiana*
(38 nodes, 12%)
Marcel Lecoufle

Phal. Little Netsuke

(Phal. Snow Leopard x
Phal. Cassandra), Regr. 1987
0.8% Phal. sanderiana,
26.6% Phal. equestris,
33.6% Phal. stuartiana
(33 nodes, 21%), E. Carlson



'Virginia' HCC/AOS

Mar 2000, NS 5.1 x 4.7 cm
38 Flws, 14 Buds, 2 Inflor,



'Olympia's Giant' HCC/AOS

Feb 1997, NS 9.0 x 9.0 cm
9 Flws, 2 Buds, 1 Inflor,

'Woody' HCC/AOS

Mar 1998, NS 5.1 x 4.7 cm
30 Flws, 0 Buds, 1 Inflor,

Confirmed Grexes Addition Phal. sanderiana & Phal. equestris, Comments

- Pink and White w/ colored lips breeding lines introduced
- Spot density and flower shape highly variable.
- Relatively successful
 - More Floriferousness
 - Spots Intensity up
 - Smaller flowers
- Hybridizers still not satisfied
- Selected other awarded grexes (~50 totally):
 - Phal. Good Tern
 - Phal. Glad Melinda
 - Phal. Ho's Fancy Leopard
 - Phal. Brother Love Sand
 - Phal. Welcome Line
 - Etc.



'Petite Prince' HCC/AOS

Dec 2014, NS 5.6 x 5.0 cm
19 Flws, 11 Buds, 1 Inflor,



Hints at Harlequins before Harlequins

Review AOS awards
1984, 1985, 1986



Phal. amboinensis 'Gloria Jean' AM/AOC, 2012 April

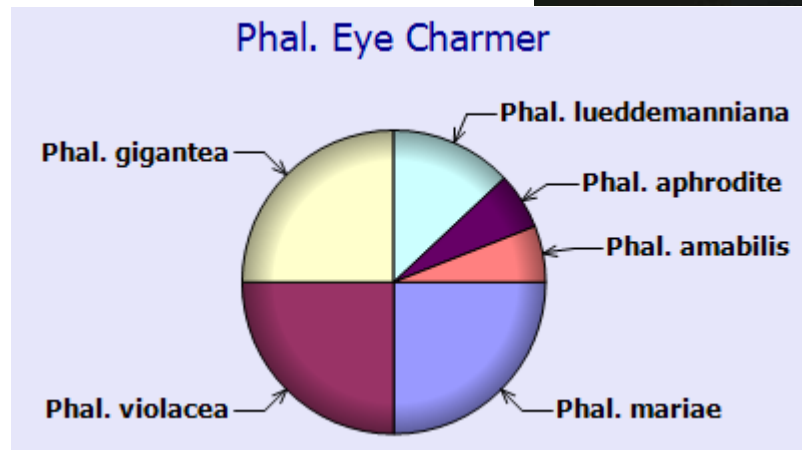
Before Phal. Golden Peoker



Phal. Macassar
 'Plantation' HCC/AOS
 (Phal. amboinensis x
 Phal. mariae)
 Feb 1984, NS 5.0 cm
 3 Flwrs, 1 Inflor



Phal. Eye Charmer
 'Stella Jane' HCC/AOS
 (Phal. Eye Dee x
 Phal. Violet Charm)
 Aug 1985, NS 6.2 cm
 5 Flwrs, 1 Bud, 1 Inflor



Phal. Golden Peoker – ‘AOS’

Genetic Composition: 13 Species				
Gen.	Genus	Name	Nds	Share
3	Phal	amboinensis	1	12.5%
3	Phal	lueddemanniana	1	12.5%
7	Phal	amabilis	32	10.2%
7	Phal	aphrodite	30	7.4%
4	Phal	fasciata	1	6.3%
4	Phal	hieroglyphica	1	6.3%
6	Phal	sumatrana	1	1.6%
8	Phal	schilleriana	5	1.3%
7	Phal	stuartiana	3	1.1%



Phalaenopsis [Phal.] Golden Peoker

Names Genus Report

Cross with Label

Compare Family Gen. Tree Text Tree Pedigree

Photography by A. Nakaji

Year: 1983

Reg: Brothers
Orig: Brothers

Offspring: 219 Offspring (First Gen.), 4,130 Total Progeny

Awards: 9 Awards, Flowers per Spike: 9.4, Natural Spread: 7.1 cm.

My Data: Plant List Entry, Awd. Photo

Cousins Genealogy Cultivate

Phal. Golden Peoker

Phal. amabilis, Phal. aphrodite, Phal. hieroglyphica, Phal. fasciata, Other, Phal. gigantea, Phal. rimestadiana, Phal. lueddemanniana, Phal. amboinensis

gigantea lueddemanniana amboinensis amabilis

Phal. Golden Peoker
 ‘Brother’ AM/AOS
 (Phal. Misty Green x Phal. Liu Tuen-Shen)
 Apr 1991, NS 7.1 cm
 8 Flwrs, 1 Inflor
 Exhibitor: Jose R. Selles
 Awarded at St. Thomas, Virgin Islands

Phal. Golden Peoker – Mr. Y-Y Lin, Brother Orchid Nursery Co.



Phal. Misty Green 'Brother'



Phal. Liu Tuen-Shen 'Brother'

X



Phal. Golden Peoker 'Brother'

NOTE: The color and pattern of the spots can vary with temperature. Cool weather increases color saturation while hot weather can nearly white out the spotting.

Phal. Golden Peoker – Mr. Y-Y Lin, Brother Orchid Nursery Co.



About 300 plants of the clone 'Brother' was first propagated in vitro via PLB system. One mutated clone was bloomed by Ever-Spring Nursery, and was named 'ES', received JC/AOS.



Phal. Golden Peoker
'Ever-Spring' JC/AOS
(Phal. Misty Green x Phal. Liu Tuen-Shen)
Apr 1996, NS 7.0 cm
7 Flwrs, 2 Buds, 1 Inflor

Dscrp: "... sepals and petals ivory-white with fine, light red spots as on Brother' AM/AOS, but with additional dark reddish purple strips and margins on random portions of sepals and petals; ..."

Phal. Golden Peoker – Mr. Y-Y Lin, Brother Orchid Nursery Co.



The clone 'ES' was further mericlone. Among the 1000 plants, 30% plants had 'ES' phenotype flowers, 40% plants had 'Brother' phenotype flowers, and 30% plants mutated and displayed asymmetrical spots and blotches with dark maroon color. The further mutated clone was named 'BL'.



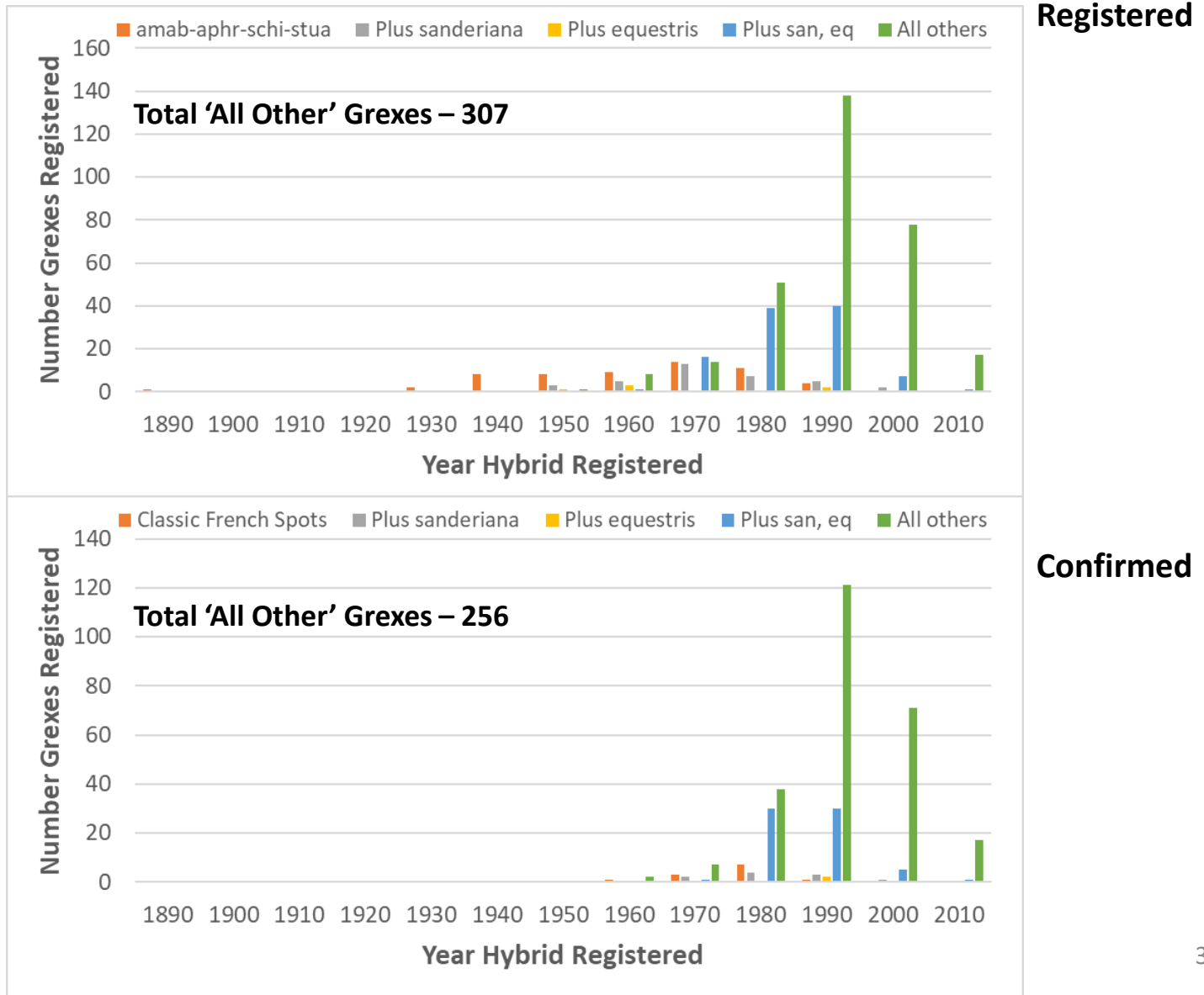
Phal. Golden Peoker
'BL' HCC/AOS
(Phal. Misty Green x Phal. Liu Tuen-Shen)
Feb 1998, NS 6.5 cm
6 Flwrs, 1 Buds, 1 Inflor

Dscrp: "... flowers white, heavily overlaid with coalescing dark raspberry splotches, uneven white margins on all parts of flower; ..."

The rest of the story to be presented later

'Evolving' French Spots

Addition of *Phal. luedemanniana*, other *Polychilos* species, and other section species in many combinations



'Evolving' French Spots

Addition of *Phal. luedemanniana*, other *Polychilos* species, and other section species in many combinations

- Included in the 'French Spots' breeding lines, initially for substance and color, in many different ways plus *potentially new ones*.
- Initially will discuss the 'group' (15 grexes) where the species were introduced into the 'classical' ***amabilis-aphrodite-scilleriana-staurtiana*** breeding line. **NOTE:** Database only 'collected' data, did not consider the parentage. ***Only one grex had any significant progeny.***
- This 'group' included the following categories and species used in each.
 - 1 *Polychilos* [Poly1] species added – 5 grexes, 25 to 31.3%, *Phal. luedemanniana* (3), *Phal. amboinensis*, and *Phal. sumatrana*,
 - 2 *Polychilos* [Poly2] species added – 6 grexes, 25 to 75%, *Phal. luedemanniana*, *Phal. amboinensis*, *Phal. hieroglyphica*, and *Phal. fasciata*
 - 3 and 4 *Polychilos* [Poly3, Poly4] species added – 3 grexes, 37.6 - 37.5%, same species as Poly2 above plus, *Phal. violacea* and *Phal. mariae*
 - 1 *Polychilos* and 1 *Parishianae* – 1 grex, 50%, *Phal. maculata* and *Phal. lobbii*

Where is the 'French spot' cut line

Addition Phal. luedemanniana and other Polychilos species and other section species only



Phal. Confetti



Phal. Flor Del Valle



Phal. L'Etacq



Phal. Soulful



Phal. Coccinelle



Phal. Octavian



Phal. Golden Summer



Phal. Jim Duffin



Phal. Plantation Carnival



Phal. Sky Rider



Phal. Golden Amboin



Phal. Babette



Phal. Cherimoya Triumph



Phal. Charisma



Phal. Zuma Rascal

Where is the 'French spot' cut line

Addition Phal. luedemanniana and other Polychilos species and other section species only



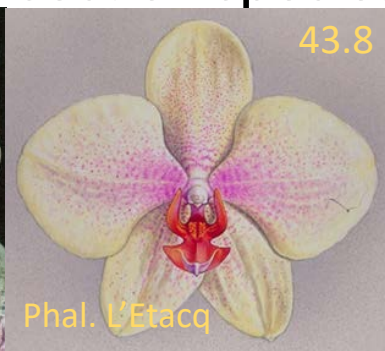
31.3

Phal. Confetti



37.5

Phal. Flor Del Valle



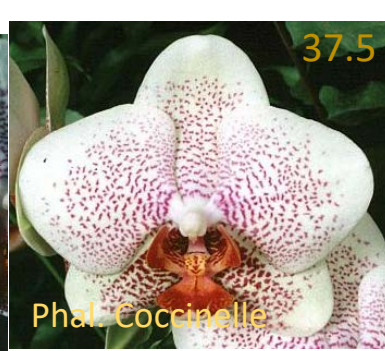
43.8

Phal. L'Etacq



50

Phal. Souffle



37.5

Phal. Coccinelle



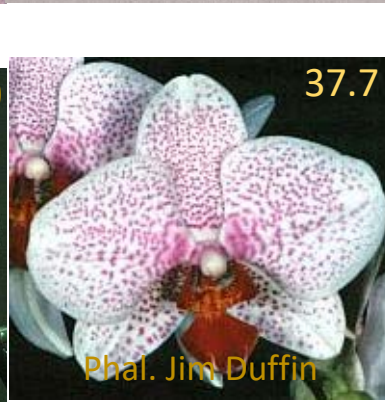
50

Phal. Octavian



50

Phal. Golden Summer



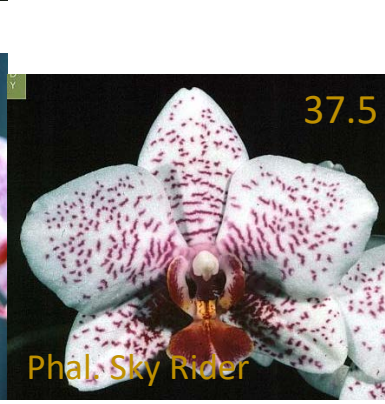
37.7

Phal. Jim Duffin



25

Phal. Plantation Carnival



37.5

Phal. Sky Rider



75

Phal. Golden Amboin



25

Phal. Babette



75

Phal. Cherimoya Triumph



37.6

Phal. Charisma



25

Phal. Zuma Rascal

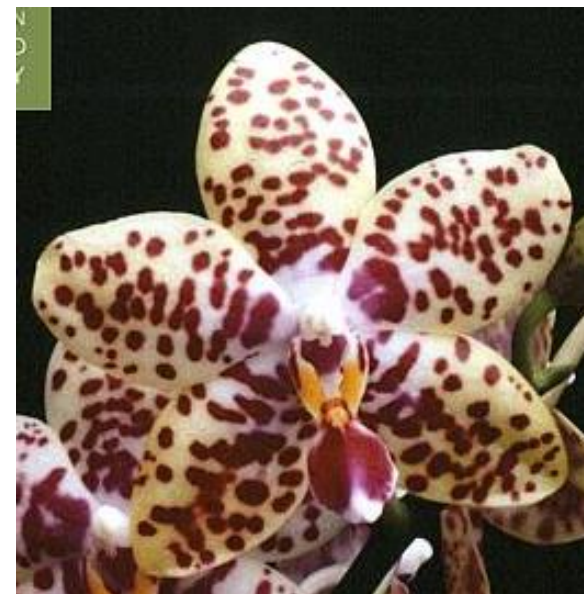
'Evolving' French Spots

Addition of *Phal. luedemanniana*, other *Polychilos* species, and other section species in many combinations

- Next will discuss the 'group' (38 grexes) where the species were introduced into the *sanderiana* – **French Spot [sanFS]** species breeding line.
- This 'group' included the following categories and species used in each.
 - 1 *Polychilos* [sanLuFS (27), sanPoly1FS (1)] species added – 28 grexes, *Phal. luedemanniana* and *Phal. sumatrana*
 - 2 *Polychilos* [sanPoly2FS] species added – 4 grexes, *Phal. luedemanniana*, *Phal. amboinensis*, *Phal. gigantea*, and *Phal. violacea*
 - 3 and 4 *Polychilos* [sanPoly3FS, sanPoly4FS] species added – 3 grexes, same species as Poly2 above plus, *Phal. violacea* and *Phal. mariae*

Confirmed Grexes

Polychilos in 'sanFS'



Phal. Kathleen Voelker
 'Malibu' HCC/AOS
 Feb 1973, NS 7.5 cm
 10 Flws, 0 Buds, 1 Inflor,
 (Phal. Rosalind x
 Phal. Mistinguett)
 Regr. 1972

6.3% Phal. luedemmaniana,
 15.6% Phal. sanderiana,
 10.0% Phal. stuartiana
 (4 nodes, 8.2%)
 E. Voelker

Phal. Rousserole
 'Dou Fang' HCC/AOS
 Apr 1996, NS 10.0 cm
 16 Flws, 4 Buds, 2 Inflor,
 (Phal. Cataracte x
 Phal. Frisson)
 Regr. 1984

3.1% Phal. luedemmaniana,
 9.4% Phal. sanderiana,
 9.7% Phal. stuartiana
 (33 nodes, 16%)
 Vacherot-Lecoufle

Phal. Royal Amboin
 'Roman Holiday' HCC/AOS
 Apr 1999, NS 6.0 x 6.0 cm
 8 Flws, 7 Buds, 2 Inflor,
 (Phal. Royal Velvet x
 Phal. amboinensis)
 Regr. 1988

1.6% Phal. luedemmaniana,
 50.0% Phal. amboinensis,
 25.0% Phal. violacea,
 3.9% Phal. sanderiana,
 2.5% Phal. stuartiana
 (4 nodes, 8%)
 J. Ewing

Confirmed Grexes

Polychilos in 'sanFS'



Phal. Miva Smartissimo
 'Firelli' AM/AOS
 Mar 2018 NS 9.0 x 8.0 cm
 14 Flws, 2 Buds, 2 Inflor,
 (Phal. Entrechat x
 Phal. Elise de Valec)
 Regr. 1988
 1.6% Phal. luedemmaniana,
 8.2% Phal. sanderiana,
 9.8% Phal. stuartiana
 (56 nodes, 14%)
 Michel Vacherot



Phal. Carmela's Spots
 'Galen Vasquez' HCC/AOS
 Nov 1990, NS 9.0 cm
 7 Flws, 0 Buds, 1 Inflor,
 (Phal. Jutta Brungor x
 Phal. Frisson)
 Regr. 1989
 21.1% Phal. luedemmaniana,
 6.3% Phal. gigantea,
 4.7% Phal. violacea,
 0.9% Phal. sanderiana,
 5.5% Phal. stuartiana
 (35 nodes, 20%)
 G. & D. Kobayashi



Phal. Vladimir Horowitz
 'Ponkan' HCC/AOS
 Apr 1990, NS 9.4 cm
 10 Flws, 0 Buds, 1 Inflor,
 (Phal. Cataracte x
 Phal. Dame de Coeur)
 Regr. 1989
 3.1% Phal. luedemmaniana,
 9.4% Phal. sanderiana,
 9.4% Phal. stuartiana
 (71 nodes, 21%)
 B. Woodson

'Evolving' French Spots

Addition of *Phal. luedemanniana*, other *Polychilos* species, and other section species in many combinations

- Next will discuss the 'group' (137 grexes) where the *Polychilos* species were introduced into the *sanderiana – equestris – French Spot [sanEqFS]* species breeding line.
- This 'group' includes the following categories and species used in each.
 - 1 *Polychilos* [sanEqLuFS, sanEqPoly1FS (4)] species added – 75 grexes, *Phal. luedemanniana* (71), *amboinensis* (3), and *Phal. venosa* (1)
 - 2 *Polychilos* [sanEqPoly2FS] species added – 25 grexes, *Phal. luedemanniana*, *Phal. amboinensis*, *Phal. hieroglyphica*, *Phal. fasciata*, and *Phal. gigantea*
 - 3 *Polychilos* [sanEqPoly3FS] species added – 21 grexes, same species as Poly2 above plus, *Phal. violacea* and *Phal. mariae*
 - 4 *Polychilos* [sanEqPoly4FS] species added – 5 grexes, same species as Poly3 above plus, *Phal. cornu-cervi*
 - 5 *Polychilos* [sanEqPoly5FS] species added – 8 grexes, same species as Poly2 above plus, *Phal. sumatrana*
 - 6 *Polychilos* and 7 *Polychilos* [sanEqPoly6FS (2)sanEqPoly7FS (1)] species added – 3 grexes, same species as Poly5 above plus, *Phal. venosa*

Confirmed Grexes

Polychilos in 'sanEqFS'



Phal. Double Delight
'January' AM/AOS
Mar 1989, NS 9.8 cm
9 Flws, 0 Buds, 1 Inflor,
(Phal. Hermione x
Phal. Pink Wave)
Regr. 1987

1.6% Phal. luedemmaniana,
6.3% Phal. equestris,
2.6% Phal. sanderiana,
13.0% Phal. stuartiana
(33 nodes, 13%)
G. & D. Kobayashi



Phal. Carmela's Wild Thing
'Brennan's Orchids' AM/AOS
Oct 1998, NS 8.5 x 7.5 cm
17 Flws, 9 Buds, 1 Inflor,
(Phal. Carmela's Spots x
Phal. Double Delight)
Regr. 1993

1.6% Phal. luedemmaniana,
3.1% Phal. equestris,
2.2% Phal. sanderiana,
11.9% Phal. stuartiana
(66 nodes, 15%)
Carmela



Phal. Ann Krull
'WoodBine' AM/AOS
Mar 1988, NS 9.0 cm
14 Flws, 4 Buds, 2 Inflor,
(Phal. Alida x
Phal. Royal Satin)
Regr. 1986

12.5% Phal. luedemmaniana,
6.3% Phal. mariae,
12.5% Phal. violacea,
6.3% Phal. cornu-cervi,
3.1% Phal. equestris,
1.3% Phal. sanderiana,
6.3% Phal. stuartiana
(23 nodes, 16%)

J. Ewing

Confirmed Grexes

Polychilos in 'sanEqFS'



Phal. Mivac Carissimo
 'Adkins Atomic' HCC/AOS
 Feb 2002 NS 9.4 x 8.3 cm
 7 Flws, 3 Buds, 1 Inflor,
 (Phal. Entrechat x
 Phal. Callicorne)
 Regr. 1988
 1.6% Phal. luedemmaniana,
 2.3% Phal. equestris,
 10.0% Phal. sanderiana,
 6.3% Phal. stuartiana
 (53 nodes, 10%)
 Michel Vacherot



Phal. Brother Danseuse
 'Diana' AM/AOS
 Feb 1999, NS 9.0 x 8.0 cm
 7 Flws, 1 Buds, 1 Inflor,
 (Phal. Brother Mirage x
 Phal. Carmela's Spots)
 Regr. 1995
 1.0% Phal. luedemmaniana,
 3.1% Phal. hieroglyphica,
 3.1% Phal. fasciata,
 0.4% Phal. equestris,
 3.9% Phal. sanderiana,
 9.8% Phal. stuartiana
 (62 nodes, 16%)
 Brother



Phal. Culiacan
 'Bryon' HCC/AOS
 Mar 2000, NS 7.4 cm
 32 Flws, 9 Buds, 1 Inflor,
 (Phal. Gato x
 Phal. Fairy Tales)
 Regr. 1992
 1.2% Phal. luedemmaniana,
 16.8% Phal. equestris,
 3.1% Phal. sanderiana,
 11.4% Phal. stuartiana
 (45 nodes, 10%)
 Zuma Canyon

'Evolving' French Spots

Addition of section Esmeralda Species

- Next will discuss the 'group' (83 grexes) where the Esmeralda (substance, color intensity, and flower spacing) species were introduced into the ***sanderiana – equestris – Polychilos French Spot [sanEqPolyFS]*** species breeding line.
- This 'group' includes the following categories and species used in each.
 - Es + 1 Polychilos [sanEqEsLuFS] species added – 14 grexes, *Phal. luedemanniana*
 - Es + 2 Polychilos [sanEqPoly2FS] species added – 41 grexes, *Phal. luedemanniana* (40), *Phal. amboinensis* (40), *Phal. hieroglyphica* (1), *Phal. fasciata* (1), and *Phal. gigantea* (1)
 - Es + 3 Polychilos [sanEqPoly3FS] species added – 2 grexes, same species as Poly2 above
 - Es + 4 Polychilos [sanEqPoly4FS] species added – 15 grexes, all using *Phal. luedemanniana*, *Phal. amboinensis*, *Phal. hieroglyphica*, and *Phal. fasciata*
 - Es + 5 Polychilos [sanEqPoly5FS] species added – 6 grexes, same species as Poly4 above plus, *Phal. gigantea* (5) or *Phal. venosa* (1)
 - Es + 6 Polychilos [sanEqPoly6FS (2)] species added – 5 grexes, same species as Poly4 above plus, *Phal. gigantea* (4), *Phal. sumatrana* (4), *Phal. mariae* (1), or *Phal. violacea* (1)

Phal. Leopard Prince

'sanEqEsPoly2FS'



Phal. Leopard Prince
 'Hwa Yuan Red Leopard' FCC/AOS
 Mar 2013, NS 11.2 x 9.6 cm
 16 Flws, 2 Buds, 1 Infl.
 Dscpt: "... epitome of French Spot style..."

or Dtps.) Leopard Prince

Names Genus Report

to Sander Explain Cross with Label

- Phal. Sun Prince
 - Phal. Cypress Pink
 - Phal. New Eagle
 - Phal. Samson
 - Phal. Houpi Beauty
 - Phal. Tsuei You Queen
 - Phal. Chiali Stripe
- Phal. Ho's French Fantasia
 - Phal. Ho's Fancy Leopard
 - Phal. Elise de Valec
 - Phal. Coquinette
 - Phal. Carmela's Spots
 - Phal. Jutta Brüngor
 - Phal. Frisson

(RHS nomenclature)

Family Gen. Tree Sander Text Tree Pedigree

Offspring

245 Offspring (First Gen.)
 854 Total Progeny

F1 Offsp. Progeny

Awards

32 Awards
 Flowers per Spike: 16.0
 Natural Spread: 9.3 cm.

Awards Metrics

My Data

Plant List Entry

Awd. Photo

Cousins Genealogy Cultivate

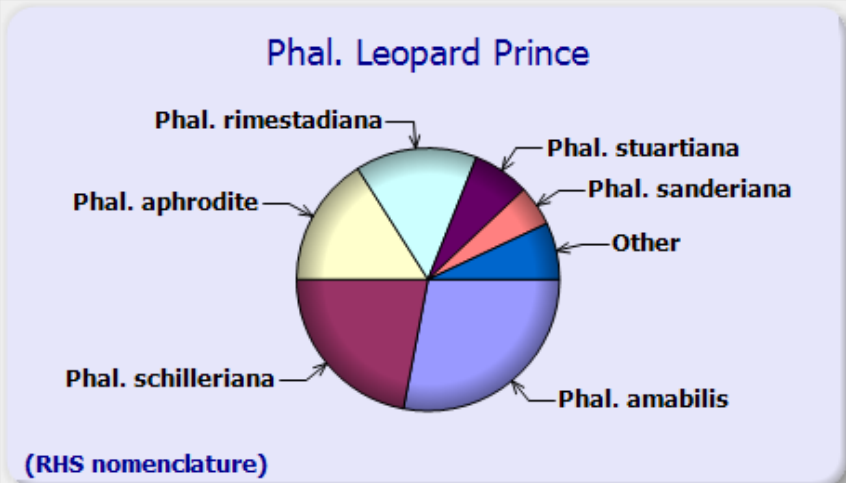
Year: 1997

Reg: Sogo
 Orig: Sogo

Photographs

49 Images in OrchidWiz
 30 Published Images

Images Img Refs.



- Phal. equestris (3.4%)
- Phal. lueddemanniana (1.3%)
- Phal. amboinensis (0.8%)
- Phal. pulcherrima (0.4%)

Phal. Leopard Prince



'Hwa Yuan Red Leopard' FCC/AOS
Mar 2013, NS 11.2 x 9.6 cm
"... dotted and striated ... rose lavender ..."



'Red Fox' HCC/AOS
May 2014, NS 8.1 x 7.1 cm
"... heavily spotted magenta ..."



'New Seasons Red' AM/AOS
Feb 2014, NS 9.7 x 8.0 cm
"... heavily overlaid red-purple ..."



'Sogo Diamond' HCC/AOS
Jan 2007, NS 9.0 x 7.2 cm
"... heavily overlaid pink distally ...
spotted amaranth centrally ..."



'Chiada #9' BM/TOGA
Jan 2006, NS 9.0 x 8.0 cm
"... spotted dark maroon ...
bordered light purple ..."



'Madison' HCC/AOS
Apr 2004, NS 8.2 x 6.5 cm
"... spotted fuchsia ..."

Confirmed Grexes

'sanEqEsPoly?FS'



Phal. Brother Sheridan
 'Orchid Konnection' AM/AOS
 Mar 2007, NS 10.1 x 8.3 cm
 18 Flws, 0 Buds, 1 Inflor,
 (Phal. Brother Isabel x
 Phal. Brother Comet)
 Repr. 2005
 0.3% Phal. pulcherrima
 3.1% Phal. luedemmaniana,
 2.1% Phal. amboinensis,
 0.8% Phal. hieroglyphica,
 0.8% Phal. fasciata,
 5.0% Phal. equestris,
 4.7% Phal. sanderiana,
 4.8% Phal. stuartiana
 (109 nodes, 4%)
 Brother



Phal. Rendezvous
 Non awarded cultivar pictured
 All three awarded cultivars
 Stripes only
 (Phal. Betty Turner x
 Phal. Florida Stripe)
 Repr. 1992
 1.6% Phal. pulcherrima
 1.4% Phal. luedemmaniana,
 5.6% Phal. equestris,
 4.5% Phal. sanderiana,
 4.2% Phal. stuartiana
 (56 nodes, 4%)
 Zuma Canyon



Phal. Acker's Sweetie
 'Zuma's China Girl' HCC/AOS
 Mar 2016, NS 10.7 x 10.0 cm
 14 Flws, 7 Buds, 1 Inflor,
 (Phal. Ho's French Fantasia x
 Phal. Taisuco Candystripe)
 Repr. 2003
 0.3% Phal. pulcherrima
 2.5% Phal. luedemmaniana,
 1.8% Phal. amboinensis,
 4.7% Phal. equestris,
 3.9% Phal. sanderiana,
 6.7% Phal. stuartiana
 (139 nodes, 6%)
 Orchids by Ackers

Confirmed Grexes

Polychilos in 'sanEqEsPoly?FS'



Phal. I-Hsin Sesame
'OX 1699' HCC/AOS
Feb 2021, NS 9.0 x 8.8 cm
14 Flws, Buds, 2 Inflor,
(Phal. Ching Her Buddha x
Phal. Leopard Prince)
Regr. 2000

0.2% Phal. pulcherrima
17.4% Phal. luedemmaniana,
9.8% Phal. amboinensis,
0.4% Phal. hieroglyphica,
0.4% Phal. fasciata,
5.5% Phal. gigantea,
1.7% Phal. equestris,
2.6% Phal. sanderiana,
3.8% Phal. stuartiana
(141 nodes, 8%)

W. T. Chien



Phal. Sogo Cherry
'Steyn's Inhle' HCC/SAOC
Jan 2009, NS 9.0 x 7.5 cm
12 Flws, Buds, 2 Inflor,
(Phal. Taisuco Firebird x
Phal. Leopard Prince)
Regr. 1999

0.7% Phal. pulcherrima
2.6% Phal. luedemmaniana,
1.9% Phal. amboinensis,
5.0% Phal. equestris,
4.0% Phal. sanderiana,
9.8% Phal. stuartiana
(180 nodes, 7%)

Sogo



Phal. Sogo Beach
'Stones River' AM/AOS
Feb 2011, NS 10.3 x 8.4 cm
7 Flwrs, 2 Buds, 1 Inflor
(Phal. Minho Princess x
Phal. Leopard Prince)
Regr. 1999

0.4% Phal. pulcherrima
3.0% Phal. luedemmaniana,
2.5% Phal. amboinensis,
4.6% Phal. equestris,
5.2% Phal. sanderiana,
2.7% Phal. stuartiana
(266 nodes, 6%)

Sogo

'Evolving' French Spots

Addition Breeding Lines: Phal. lindenii

- Next will discuss the 'group' (20 grexes) where the Phal. lindenii (stripes) is introduced into many of the **sanderiana – equestris – Polychilos French Spot [sanEqPolyFS]** species breeding lines.
- This 'group' includes the following categories and species used in each.
 - Li + sanEqFS breeding – 3 grexes
 - Li + sanEqLuFS breeding – 10 grexes
 - Li + sanEqPoly2FS breeding – 6 grexes
 - Li + sanEqEsPoly2FS breeding – 1 grexes

Confirmed Grexes

Polychilos in 'sanEqEsPoly?FS'



Phal. Alysha's Rose
'Sheldon' AM/AOS
Mar 1994, NS 9.3 x 8.2 cm
9 Flws, 0 Buds, 1 Inflor,
(Phal. Pink Zebra x
Phal. Memoria Yoshino Mishima)
Regr. 1991
12.5% Phal. lindenii
2.0% Phal. luedemmaniana,
5.5% Phal. equestris,
1.3% Phal. sanderiana,
2.6% Phal. stuartiana
(6 nodes, 3%)
Carmela



Phal. Alysha's Delight
'Breckinridge' HCC/SAOC
Sep 1995, NS 9.5 x 8.4 cm
9 Flws, 0 Buds, 1 Inflor,
(Phal. Double Delight x
Phal. Alysha's Rose)
Regr. 1994
6.3% Phal. lindenii
1.8% Phal. luedemmaniana,
5.9% Phal. equestris,
2.0% Phal. sanderiana,
7.8% Phal. stuartiana
(39 nodes, 8%)
Carmela



Phal. Exotic Sands
'Lois' HCC/AOS
Oct 1988, NS 8.5 x 7.0 cm
7 Flwrs, 0 Buds, 1 Inflor
(Phal. Exotic Network x
Phal. Sand Pebbles)
Regr. 1995
6.3% Phal. lindenii
1.0% Phal. luedemmaniana,
5.1% Phal. amboinensis,
4.6% Phal. equestris,
1.2% Phal. sanderiana,
9.1% Phal. stuartiana
(57 nodes, 11%)
S. Collins

'Evolving' French Spots, Future Directions

Addition Breeding Lines: Pink, Yellow

- Next will discuss some novelty grexes that could potential be lead to new breeding lines.
- Pink with dark red spots
- Yellow and red spots

Confirmed Grexes, Future Directions

Polychilos in 'sanEqEsPoly?FS'



Phal. Hua Yuan Princess
 'Hua Yuan Prince' AM/AOS
 Mar 2010, NS 11.8 x 10.2 cm
 17 Flws, 16 Buds, 2 Inflor,
 (Phal. I-Hsin Cloris x
 Phal. Leopard Prince)
 Regr. 2008
 12.5% Phal. lindenii
 2.0% Phal. luedemmaniana,
 5.5% Phal. equestris,
 1.3% Phal. sanderiana,
 2.6% Phal. stuartiana
 (6 nodes, 3%)
 Carmela



Phal. Copa de Oro
 'Coqui' HCC/AOS
 Mar 1989, NS 6.7 cm
 4 Flws, 1 Buds, 1 Inflor,
 (Phal. venosa x
 Phal. Heartbeat)
 Regr. 1989
 50% Phal. venosa
 6.3% Phal. equestris,
 1.6% Phal. sanderiana,
 1.8% Phal. stuartiana
 (4 nodes, 5%)
 Zuma Canyon



Phal. Brother Isaplayer
 'Gold Happy' AM/AOS
 Feb 2013, NS 10.5 x 9.3 cm
 5 Flws, 5 Buds, 1 Inflor
 (Phal. Brother Isabel x
 Phal. Brother New Player)
 Regr. 2014
 6.3% Phal. luedemmaniana,
 4.3% Phal. amboinensis,
 1.6% Phal. hieroglyphica,
 1.6% Phal. fasciata,
 6.3% Phal. gigantea,
 12.5% Phal. venosa,
 2.8% Phal. equestris,
 2.1% Phal. sanderiana,
 3% Phal. stuartiana
 (51 nodes, 4%)
 Brother

Latest awardees (‘Nouvoeau’) Classic ‘French Spots’



Phal. Miva Smartissimo
‘Firelli’ AM/AOS
(Phal. Entrechat x Phal. Elise de Valec)
Mar 2018, NS 9.0 x 8.0 cm
14 Flwrs, 1 Inflor, 2 Buds, 1 Inflor
8.2% sanderiana, 1.6% lueddemanniana

Phal. Leopard Prince Progeny

Select latest awardees – no Phal. Golden Peoker



Phal. Tying Shin Unicorn

'Iowa G817' HCC/AOS

(Phal. Leopard Prince x Phal. Yu Pin Fireworks)

Jul 2017, NS 7.9 x 7.5 cm

7 Flwrs, 17 Buds, 2 Inflor



Phal. Lin's Genki

'FM 5030' AM/AOS

(Phal. Sogo Genki x Phal. Leopard Prince)

Nov 2018, NS 10.4 x 9.2 cm

9 Flwrs, 9 Buds, 1 Inflor

Phal. Leopard Prince Progeny

Select latest awardees – no Phal. Golden Peoker



Phal. Fangmei Circles
'FM 7032-2' AM/AOS
(Phal. Lin's Genki x Phal. Yu Pin Easter Island)
Mar 2016, NS 8.2 x 6.8 cm
10 Flwrs, 3 Buds, 1 Inflor



Phal. OX Leo Prince
'OX 3004' AM/AOS
(Phal. Minho Princess x Phal. Leopard Prince)
Mar 2017, NS 8.0 x 8.0 cm
20 Flwrs, 2 Buds, 2 Inflor

Phal. Leopard Prince Progeny

Select latest awardees – no Phal. Golden Peoker



Phal. PZO Leopard
'PZP 107' AM/AOS

(Phal. Kun Nun Walnut Prince x Phal. Leopard Prince)

Mar 2015, NS 10.5 x 9.0 cm

18 Flwrs, 1 Buds, 2 Inflor



Phal. Lanyu Pink Leopard
'White Galaxy' AM-CCM/AOS

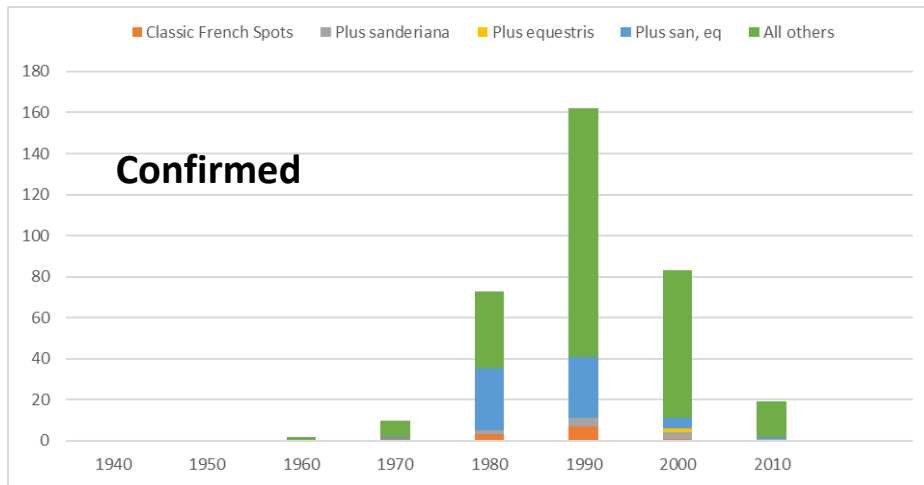
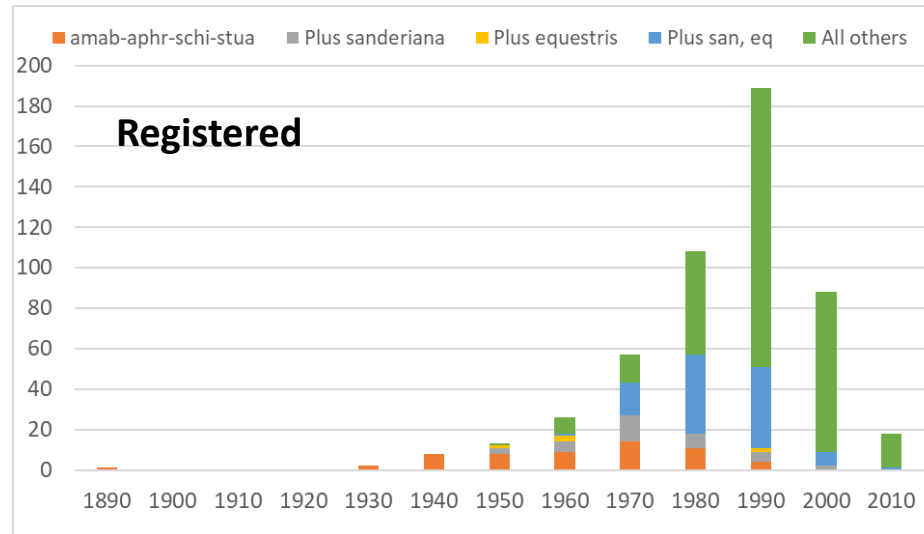
(Phal. Leopard Prince x Phal. Nobby's Pink Lady)

Mar 2015, NS 8.3 x 6.0 cm

50 Flwrs, 34 Buds, 2 Inflor

Summary

- Number of registered and 'confirmed' French Spot progeny peaked in the 1990s
- Most of the present day 'French Spot' progeny are not the classical 'French Spot' color pattern, but more, larger spots, blotches, and 'tessellation' to solid pattern
- Impact of cloning not included in the discussion



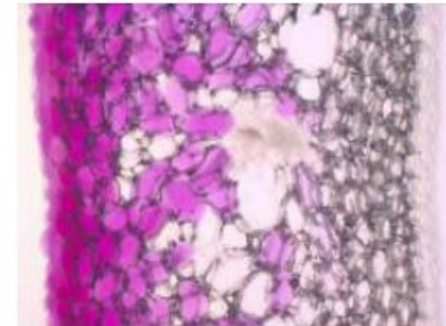
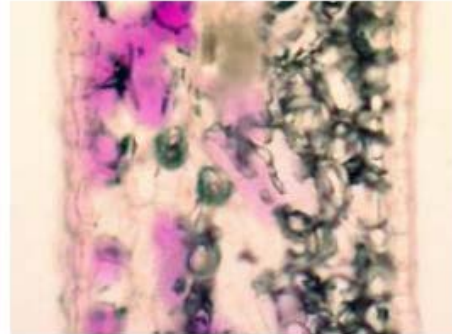
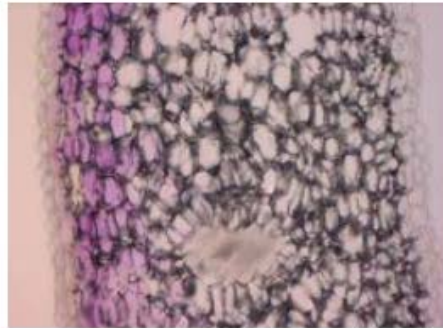
References

- www.orchidspecies.com
- <http://apps.kew.org/wcsp/qsearch.do>
- <http://www.plantsoftheworldonline.org/>
- <https://secure.aos.org/aqplus/SearchAwards.aspx>
- <https://www.bbg.org/gardening/article/phalaenopsis>
- <https://www.aos.org/orchids/additional-resources/phalaenopsis-part-2.aspx>
- <https://www.aos.org/orchids/additional-resources/phalaenopsis-the-genus.aspx>
- <http://www.phals.net/botaniques.html>
- OrchidWiz.Database x7.2, update: March 2021
- [Phalaenopsis Golden Peoker \(ksmaward.com\)](http://www.ksmaward.com)
- Christenson, E.; *Phalaenopsis – A Monograph*, 2001
- Frowine, S. A.; *Moth Orchids – The Complete Guide to Phalaenopsis*, 2008
- The RHS Awarded Orchids Paintings Collection, Elliott, B., Oakeley, H.
- Awards Quarterly, Number 2, 1990, *Judging Spotted Phalaenopsis*, Stubbings, J. D.; Vol. 21(2), pp. 82-84
- Awards Quarterly, Number 3, 2004, *Are Harlequin Phalaenopsis and Doritaenopsis Judged Fairly?*, Thorne, L.; Vol. 35 (3), pp 213-214
- AOS Bulletin, Sep 1966, *Adventures in Hybridizing Phalaenopsis*, Vaughn, L. C., Vol. 35(9), pg. 745-758
- AOS Bulletin, Nov 1984, *Novas of the Phalassenopsis World – 3*, Freed, H.; Vol. 53(11), pg. 1145-1150
- AOS Bulletin, Apr 1986, Vol. 55(4), pg. 408
- AOS Bulletin, Mar 1987, *Spotted Phalaenopsis*, Smith, F., Vol. 56(3), pg. 228-231
- Orchids, Feb 2004, *Phalaenopsis Culture – Advice for growing Twenty Species*, Harper, T., Vol. 73(2), pg. 118-127
- Orchids, Sep 2010, *Vacherot & Lecoufle – A Legacy of Orchids*, Bradley, J. H., Vol. 79(9), pg. 508-517
- Orchids, Apr 2014, *Epic Orchids – The First Class Certificates of 2013*, Barrett, K., Vol. 83(4), pg. 226-239
- Orchids, Jun 2015, *The Genus Phalaenopsis – The Species*, Fighetti, C.; Vol. 84(6), pg. 352-355
- Orchids, Jun 2015, *Phalaenopsis Culture – Advice for growing Twenty Species*, Harper, T., Vol. 84(6), pg. 356-366

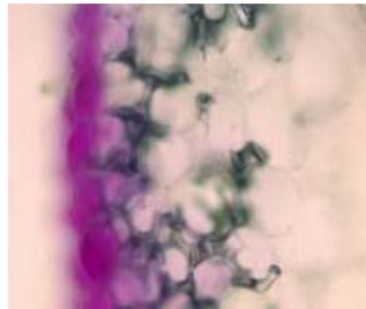
Additional material

Phal. Golden Peoker – Mr. Y-Y Lin, Brother Orchid Nursery Co.

Flower tepal histological observation of the clones-
'Brother', 'ES' and 'BL'



↖
**The color occurs
only in the mesophyll**



↖
epidermis to mesophyll

Phal. Golden Peoker – Mr. Y-Y Lin, Brother Orchid Nursery Co.

In my breeding experience, there are some species contributed to the color aggregation of spots, such as

Phal. amboinensis (common type)

Phal. equestris (Iloco type)

Phal. violacea (*bellina*)

Phal. venosa.

Phal. Golden Peoker – Mr. Y-Y Lin, Brother Orchid Nursery Co.

The effect of *Phal. amboinensis* on color aggregation



Phal. Carnival

x



Phal. amboinensis



Phal. Carnival Queen

Phal. Golden Peoker – Mr. Y-Y Lin, Brother Orchid Nursery Co.

The effect of *Phal. equestris* on color aggregation



Phal. Super Stupid x



Phal. equestris



Phal. Brother Pico Mary



Phal. Brother Yew x



Phal. Cassandra



Phal. Brother Sandra



Phal. Brother Glamour x



Phal. Carmela's Pixie



Phal. Brother Liata

Phal. Golden Peoker –
Mr. Y-Y Lin, Brother Orchid Nursery Co.

The effects of *Phal. violacea* and *Phal. venosa*
on color aggragation



Phal. violacea
(*Phal. bellina*)

x

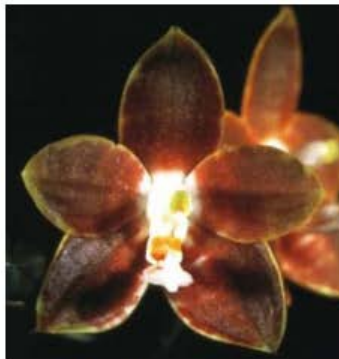


Phal. gigantea

=



Phal. Mok Choi Yew



Phal. venosa

x



Phal. Brother Stripes

=



Phal. Golden Peoker –
Mr. Y-Y Lin, Brother Orchid Nursery Co.

The hybrids of *Phal.* Golden Peoker 'BL' with species



Phal. Golden Peoker 'BL' x
Phal. celebensis



Phal. Golden Peoker 'BL' x
Phal. equestris



Phal. Golden Peoker 'BL' x
Phal. gigantea

Phal. Golden Peoker – Mr. Y-Y Lin, Brother Orchid Nursery Co.



*Phal. Golden Peoker 'BL' x
Phal. violacea*

*Phal. Golden Peoker 'BL' x
Phal. mannii*

*Phal. Golden Peoker 'BL' x
Doritis pulcherrima*